



# 2013 ANNUAL REPORT

**KDL** Information.  
Kent District Library Ideas.  
*Excitement!*

[www.kdl.org](http://www.kdl.org)







# LETTER FROM THE DIRECTOR

After KDL received the EPIC Award for Excellence in Business from the Grand Rapids Area Chamber of Commerce, we sent the award on a tour to visit those staff members and customers who make every day epic at KDL. Each day, more than 8,000 people visit a KDL branch and nearly 7,000 more visit us online. KDL staff members answer nearly 2,500 questions every day. Each interaction we have with our customers is an opportunity to share an epic journey.

I am so proud of our exceptional staff and our many community partners for the journeys we have taken in the last year. In 2013, KDL launched our Happiness Project, combining life-enhancing programs on health, wellness and creativity, with opportunities to improve the lives of others by partnering with local nonprofits. We began circulating Kill-A-Watt EZ meters so residents can inform themselves about their energy usage. KDL offered programs in collaboration with the State of Michigan and Priority Health to inform people about the Affordable Care Act. Our partnership with the Grand Rapids Civic Theatre provided free live theatre experiences for kids and adults. Our ongoing partnership with Mill Creek Middle School in Comstock Park validates leisure reading as a way to improve kids' reading skills. Once again, we have broken our own record of having the most popular summer reading program in Michigan, with over 29,000 participants.

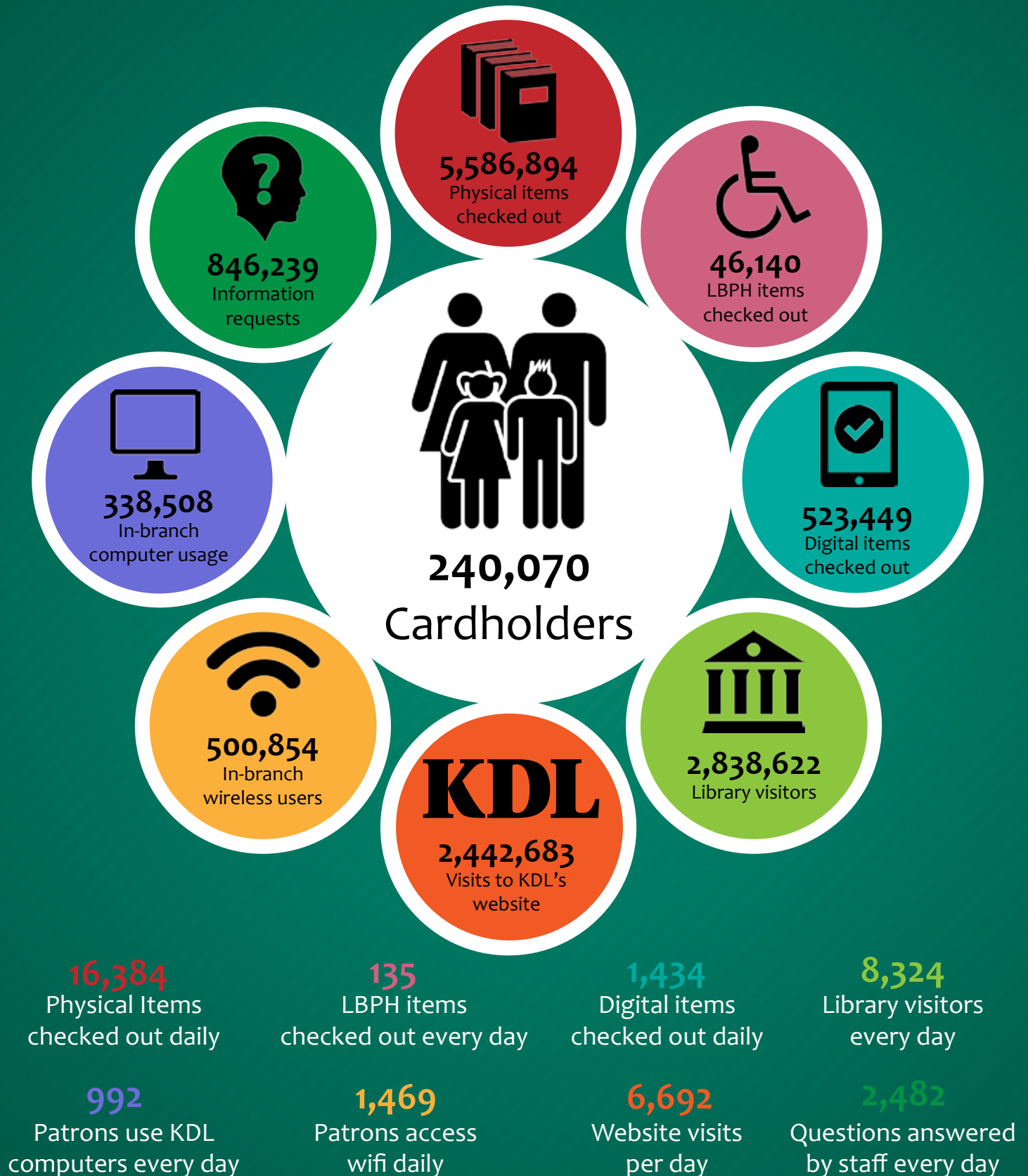
Appreciation for these services is evident in the results of a public opinion survey performed in 2013. The survey found that 93% of residents believe KDL is an important part of the community, 90% find our locations and hours to be convenient, 89% believe KDL provides valuable services for adults and senior citizens, and 86% believe KDL's reading programs help young children become lifelong readers and learners.

In August 2014, KDL residents will vote on a millage to continue funding library services for another 10 years. We hope to provide our customers with many more epic days in the future.

A handwritten signature in black ink, appearing to read "Lance Werner", with a long horizontal flourish extending to the right.

Lance Werner

# SERVICES AT A GLANCE



# CREATE AT KDL



## WRITING

In 2013, KDL and partners Capital Area District Libraries, Pooh's Corner and Schuler Books and Music launched the second annual **Write Michigan Short Story Contest**. KDL hosted writing workshops for teens and adults to hone their craft. Nearly 900 writers submitted a story for a chance to win prizes and be published in an anthology.

KDL hosted the second annual **Celebrate the Mitten Writers' Conference** attended by nearly 200 aspiring authors.

Once again KDL celebrated Poetry Month with our annual **Word Wise Teen Poetry Contest**.

## FILM

KDL provided greater opportunities for teens to participate in our **Kent County Teen Film Festival** by hosting a storyboarding workshop and a full-day filming and editing workshop for teens. Many of the teens who participated in the workshops made films that were accepted into the Festival.



## MUSIC

KDL's **Kentwoodpalooza** summer concert grows in popularity every year. Teen bands are featured in this outdoor music festival planned and hosted by teen volunteers.

## STUDIO KDL

Located in KDL's Cascade Township Branch, **Studio KDL** launched in 2013, offering equipment and instruction so customers can make movies, create podcasts, record audiobooks, design promotional videos for themselves or a business or just spend time in creative play.



# KDL PROGRAMS



## EARLY LITERACY

KDL's Early Literacy programs help children develop skills which serve as building blocks for later reading and writing. Storytimes incorporate the five practices children need before they are ready to start school: talking, singing, reading, writing and playing. From infancy to kindergarten and beyond, KDL makes learning to read fun for kids and their families.

"We didn't have the funds to enroll our child into 3-year-old preschool, so we decided to make his school at home. One of his favorite days is 'library school day.' At the beginning, he wouldn't sit still long enough to hear two pages, but he has grown so much this year. We have saved hundreds on preschool bills just by utilizing the library. I love KDL!"

– Cascade Township Branch patron Tricia Ruffer

## SUMMER READING

KDL offers the most popular summer reading program in the state with almost 30,000 participants. Nearly 80% of participants are children and teens who read and do other fun activities with the library. Children who read over the summer are more likely to retain or even improve their reading grade-level and start the next school year ready to advance their learning. The remaining 20% of participants are adults who model reading as a lifelong habit for learning and entertainment.

"My 9-year-old grandson hated reading in school last year. He joined the Summer Reading Program at KDL, and now he reads all the time!"

– Alpine Township Branch patron Melissa Schaefer



**2,484**

Programs for Young Children

**65,937**

Attendees

**241**

Programs for School-Age Children

**6,124**

Attendees

**313**

Programs for Teens

**5,171**

Attendees



## JOB SKILLS & COMPUTER CLASSES

KDL offers free computer classes, technology training sessions and workshops for job seekers at multiple branch locations. These classes range from a comprehensive six-hour series on Microsoft Word, to exploring online genealogy resources, to our popular “Speak to a Geek” sessions.

“KDL . . . helped me successfully re-enter the work world after a 16-year absence. The classes taught me how to hone my career skills, how to present myself at my best to potential employers, how to network and how to seek open positions using the most current methods. Using what I was taught, I found a wonderful job using my foreign language and teaching skills. I can’t say enough about how grateful I am for KDL and for these classes for job seekers like myself.”

– Kentwood (Richard L. Root) Branch patron Mary Raab

## EARLY CHILDHOOD ESSENTIALS

KDL offers child development classes called Early Childhood Essentials. These courses offer free professional development hours toward state certification for child care providers. Parents and child care providers alike benefit from these courses on topics such as incorporating math concepts into everyday activities and feeding fussy eaters.

“I know of no other place that does this training that doesn’t charge for it. And there’s a wide variety so you can choose what’s interesting to you. It’s also nice that they are at multiple branches, so if the date doesn’t work for one I can always go to another class.”

– Ann Swanson, licensed daycare provider



**738**

Programs for Families

**35,071**

Attendees

**976**

Programs for Adults

**9,314**

Attendees

**639**

Private Programs

**34,908**

Attendees



# ORGANIZATIONAL STRUCTURE

## BOARD OF TRUSTEES

The Kent District Library Board of Trustees is composed of 8 members representing geographic regions of the KDL Service Area. Trustees must live in the region they represent. Board members are appointed for four-year terms by the Kent County Board of Commissioners based on recommendations from the eight regions. The KDL Board meets monthly. Major duties include establishing and maintaining a public library for Kent District Library, establishing library policies, employing the Library Director, adopting an annual budget, approving the expenditure of funds, entering into contracts and controlling all KDL property.



**Charles R. Myers, Chair**  
**Region 4**  
City of Lowell, and Vergennes,  
Lowell and Bowne Townships



**Vickie Hoekstra, Vice Chair**  
**Region 8**  
City of Wyoming



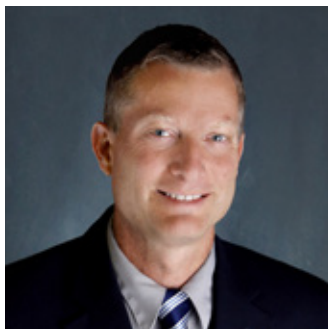
**Penny Weller, Treasurer**  
**Region 3**  
City of Walker, and Plainfield  
and Alpine Townships



**Carol Simpson, Secretary**  
**Region 1**  
Spencer, Tyrone, Nelson  
and Oakfield Townships



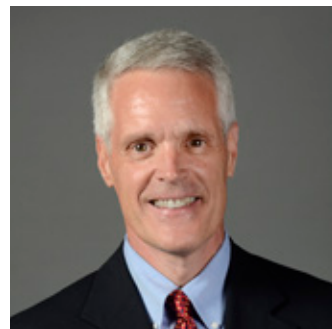
**Shirley Bruursema, Trustee**  
**Region 6**  
City of Kentwood, and Gaines  
and Caledonia Townships



**Scott Ellison, Trustee**  
**Region 7**  
City of Grandville  
and Byron Township



**Scott Garrison, Trustee**  
**Region 2**  
City of Rockford, and Cannon,  
Algoma, Courtland  
and Grattan Townships



**Craig Wilson, Trustee**  
**Region 5**  
City of East Grand Rapids,  
and Cascade, Ada and  
Grand Rapids Townships



# LEADERSHIP TEAM

The Kent District Library Leadership Team leads the staff in support of KDL's strategic plan, coordinates organizational functions and facilitates communication. Members of the Leadership Team are:

## LIBRARY DIRECTOR

Lance Werner

## DIRECTOR OF FINANCE

Sherry Bava

## DIRECTOR OF INFORMATION TECHNOLOGY

Michael Carpenter

## ASSISTANT DIRECTOR

Michelle Boisvenue-Fox

## DIRECTOR OF HUMAN RESOURCES

Brian Mortimore

## 2013 AWARDS



Kent District Library was awarded the EPIC Award for **Excellence in Business** by the Grand Rapids Area Chamber of Commerce. The EPIC Awards (which stands for Entrepreneurial, Progressive, Innovative, and Collaborative) recognize businesses that support the community, demonstrate growth, are innovative, and have worked with others as mentors and collaborators.

As the first library to initiate the Michigan Quality Council's review process, Kent District Library received the **Lighthouse Award** by the MQC for KDL's efforts toward quality excellence.

Dawn Lewis, East Grand Rapids Branch Manager, was awarded the 2013 **Distinguished Service Award** by the East Grand Rapids Parent Teacher Association Council for helping switch the local school libraries to the "learning commons model."

Kent District Library was awarded the Library of Michigan Foundation's **Citation of Excellence** for superior customer service.



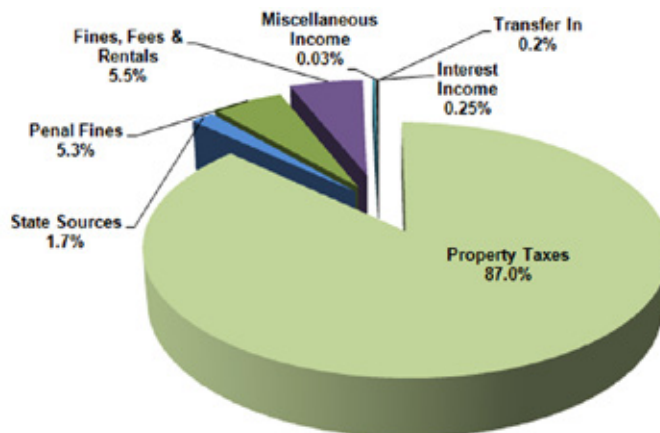
KDL received the **Linda E. Anderson Award** from Employers for Better Health in recognition of KDL's achievement in providing system-wide CPR and first-aid training, and for the installation of defibrillator machines in all KDL locations.

KDL's Collection Development and Collection Services Departments were recognized with KDL's **Cool School Team Award** for their work in transitioning the library to a new DeweyFree model of arranging materials, thereby improving customers' ease in finding items on our shelves.

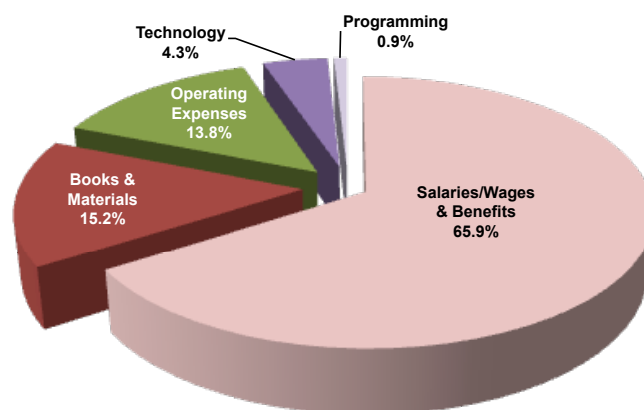
Youth Librarian Monica Walen received KDL's **Starfish Award** for her creative ideas and commitment to building strong partnerships between KDL and community organizations. In particular, she created several after-school programs for kids and teens such as "Science in the Stacks" and a popular chess club at the KDL Wyoming Branch.

# FINANCIAL REPORT

REVENUE	
Property Taxes - Millage (.88mills)	13,153,463
State Sources	262,215
Penal Fines	803,963
Fines, Fees & Rentals	833,958
Interest Income	37,105
Miscellaneous Income	3,799
Transfer In - Donation - AGF Fund	28,060
<b>TOTAL REVENUES</b>	<b>\$15,122,563</b>



EXPENDITURES	
Salaries/Wages	7,848,869
Benefits	1,874,059
Books & Materials	2,237,436
Operating Expenses	2,033,247
Technology (includes ILS & Internet)	639,434
Programming	128,662
<b>TOTAL EXPENDITURES</b>	<b>\$14,761,707</b>



Fund Balance - Beginning of Year	3,460,968
Fund Balance - Unspendable (Prepays)	-88,435
Fund Balance - Board Committed - ILS	-575,000
Fund Balance - Board Committed - Capital Projects	-215,300
Excess Revenues over Expenditures	360,857
<b>TOTAL UNDESIGNATED FUND BALANCE (at Year End)</b>	<b>\$2,943,090</b>

The above numbers have been derived from the 2013 Financial Statements.  
Complete audited Annual Financial Statements will be available after June 2014.



# FUND DEVELOPMENT BOARD

Kent District Library's Fund Development Board is composed of community leaders who have a passion for libraries. Fund Development Board members support the mission, vision, and values of Kent District Library, and act responsibly and prudently as stewards of KDL. These members work tirelessly to raise private donations that support programming, collections and special projects that enhance the library experience for all community members.



**Maureen Fitzgerald Penn**  
**Chair**  
Penn & Ink Communications, Inc.



**Linda Jo Carron**  
Knap & Vogt



**Scott Ellison**  
Chemical Bank  
KDL Board of Trustees



**Mary Ford**  
Community Advocate



**Jamie Junod**  
Stifel Nicolaus & Company, Inc.



**Jim Komondy**  
Law, Weathers & Richardson, P.C.



**Penny Weller**  
KDL Board of Trustees

Not Pictured: Dan Durkee (Fishbeck, Thompson, Carr & Huber, Inc.), Joy Fossel (Varnum Law) and Anna Hickman (Grand Rapids Metrology).

## Donations to Kent District Library support initiatives such as:

### Collections/Databases



Little Pim—a fun and convenient online tool to introduce children to foreign languages.

### Programs/Events



The Kent County Teen Film Festival educating and celebrating young filmmakers.

### Special Projects



Musical chimes in the Spencer Township Branch's Children's Exploration Garden.

# DONATION REPORT

The Kent District Library Board of Trustees and Fund Development board extends a special thank you to the individuals, corporations and foundations that have generously supported Kent District Library in 2013. Community support through these donations allows KDL to continue to provide outstanding programming and services to our patrons.

## THE KDL ENDOWMENT FUND

We gratefully acknowledge those gifts given to the KDL Endowment Fund from January 1 – December 31, 2013. The KDL Endowment Fund is held at the Grand Rapids Community Foundation.

### GIFTS OF \$250+

John and Mary Lange  
Gail DeYoung

### GIFTS OF \$100+

Eli Lilly Foundation  
Bill and Mary Ford (In  
Memory of Martha West)  
Cheryl Garrison

### GIFTS OF \$1+

Mortimore Family  
Heidi Nagel  
Linda Vos  
Lance Werner

## THE KDL ANNUAL FUND

We gratefully acknowledge those gifts given to the KDL Annual Fund from January 1 – December 31, 2013. These gifts support collections and programs for all ages including, but not limited to: KDLville, *Play, Grow, Read* to Your Baby, early childhood education classes, KDL's summer reading program, computer classes, and the Teen Film Festival.

### AUSTEN SOCIETY (GIFTS OF \$5,000+)

The Iserv Company  
Meijer  
PNC Foundation

### TWAIN SOCIETY (GIFTS OF \$2,500+)

Blandford Nature Center  
CompuCraft  
Macy's

### DICKENS SOCIETY (GIFTS OF \$1,000+)

Bloom Sluggett and Morgan, P.C.  
Chemical Bank  
Fifth Third Bank  
Friends of the Cascade Township Library

Hungerford, Aldrin, Nichols & Carter, P.C.  
Kenneth and Linda Krombeen  
Norris, Perné & French, LLP  
Steel Craft Technologies, Inc.

### STEINBECK SOCIETY (GIFTS OF \$500+)

Applied Imaging  
Aquinas College – Contemporary Writers Series  
Mary Burns  
Crowe Horwath, LLP  
Fishbeck, Thompson, Carr & Huber, Inc.  
Bill and Mary Ford

Foster Swift  
Friends of the Englehardt Library  
Karl Orthodontics  
King Milling Company  
Library of Michigan Foundation  
Nucraft Furniture Company

Old Orchard Brands, LLC  
Scott and Anne Rush  
Stifel, Nicolaus & Company, Inc.  
Phillip Van Baren  
Wm.B Eerdmans Publishing  
West Michigan Whitecaps

### POE SOCIETY (GIFTS OF \$250+)

Amazon.com  
Barbara Krause Bunbury  
Linda Jo Carron  
Cascade Engineering  
Inta Grace

Eiko Kondo  
Joshua and Melanie Meringa  
Michigan Film Office  
Nate and Carol Mohr  
Megan Niergarth

Cornelius Plantinga  
Carol Simpson  
Mike and Brenda Warne  
Steven Wuerthele  
Richard and Barbara Young

### ALCOTT SOCIETY (GIFTS OF \$100+)

William and Jill Beute  
Martha Blandford  
Michelle Boisvenue-Fox  
Dick and Judy Byrne  
Charles and Lucy Caldwell  
Diane Carlson  
Hazel Carpenter  
David and Diane Comfort

Eli Lilly Foundation  
Scott and Kathy Ellison  
Barbara Fishback  
Patricia Jane Flaherty  
Karilyn Frederick  
Charles and Betty Jean Fry  
Frederick and Ruth Garver (In  
Memory of Clyde L. Garver)

Kathryn Gerow  
Sandra Graham  
Christopher Haizman  
Miles and Linda Huffaker  
Paul and Diane Hummel  
Douglas and Karen Irvine  
Win and Kyle Irwin  
Jean Iwema



### **ALCOTT SOCIETY (Continued...)**

John and Mary Ellen Karcis  
David and Jennifer Khorey  
John Knoppers  
Laurie Laarman  
Patrick Ladwig  
Lake Michigan Dental (In Memory of Vicki Lee Bliss)  
Dorothy Lorson  
Gayle Lycos  
Hugh and Georgia Makens  
Joseph and Barbara Marconi  
Rodney and Mimi Martin  
George and Katy McAleenan  
Kate McCarthy

Martha Mealy (In Memory of Jane Mealy)  
Laura Miller (In Memory of Gale Traywick)  
Patrick and Christine Muldoon  
Jean Mulford  
Bonnie Munger  
Heidi Nagel  
Valerie Nelson  
Scott and Sarah Pastoor  
Aaron and Sharon Phipps  
Essie Pringle  
Ronald and Kathie Redman  
Lori Reineke  
Amy Rokos

Robert and Karen Schermer  
Rosemary Schnipke  
Harold and Janet Schuiling (In Memory of  
Ada Mae Rozenboom)  
Brent and Diane Slay  
Jerome and Helen Smith  
Shelly Smith  
Gary Stark  
Kathleen Underwood  
Ralph and Patricia Walsh  
Don and Sandy Williams  
Otis and Anne Wilson  
Mary Yoak

### **HEMINGWAY SOCIETY (GIFTS OF \$50+)**

Terry and Geraldine Abel  
Edward Aboufadel, M.D.  
Patsy Allen  
Dale and Carol Austin  
Lou and Linda Berra  
Jack and Madelyn Bolt  
Sharon Bradt  
Gretchen Brink  
George and Sara D'Archangel  
Daniel and Jan Durkee  
Tony and Jennifer Dykhous  
Jim and Harriet Engbers  
David and Ruth Fry  
Richard and Patricia Hall

Steven Handlovits  
Lonnie Hansen (In Memory of Vicki Lee Bliss)  
Bill and Claudia Hardy  
Michael Harvey (In Memory of Gale Traywick)  
Dorothy Holt  
Phil and Cherry Jacobus  
Claire Johnston  
Ethel Karsten  
Herbert and Wilma Jean Krol  
Lakeland Library Cooperative  
Arend and Nancy Lubbers  
Aaron Mansfield (In Memory of Gale Traywick)  
Charles and Noreen Myers  
Scott E. Petersen

Ray and Francina Roberts  
Judson and Margaret Ross  
Howard and Carolyn Rubin  
Tammy Sadek, D.V.M.  
Ken Schepers  
Joy Smith  
Sandra Snabb  
Shirley Switek  
John and Cheryl Tully  
Mike Waalkes  
Cindy Wabeke (In Memory of Vicki Lee Bliss)  
Lois Waldecker  
Suzanne Winter  
Ronald and Diane Woods (In Memory of  
Mayor Richard L. Root)

### **DR. SEUSS SOCIETY (GIFTS OF \$1+)**

Bernadine Agacinski  
Michael and Katrina Alexander  
John Alt  
James Andersen  
Garnet Angel  
Edgar and Marie Ault  
Dean and Janet Bailey  
Robin Baker  
Robert and Sandra Barkema  
Jean Barkin  
Carla Blandford  
Jane Bodenmiller  
Elaine Boone  
Fred Jr. and Nancy Brailey  
Mary Brander  
Sandra Brinkman  
Robert Burr  
Margaret Campbell  
Sarah Dominic  
Paula Down  
Nancy Duiven  
Pamela Dutcher  
Julie Ebels  
Richard and Sandra Eby  
Mike and Shelly Eddington (In Memory of  
Vicki Lee Bliss)

Daniel and Victoria Erickson  
Paul and Betty Flak  
Sandra Genson  
William and Joanne Gerke  
Doris Gorney  
Patricia Hastings  
Jane Hesselschwerdt  
Lester and Chloe Jones  
Sara Kaplan (In Memory of Gale Traywick)  
Jon and Kerrie Karel  
Mary Anne Karmes (In Memory of  
Gale Traywick)  
Vicki Kimball  
David King  
Robert Knapp  
Garry and Barbara Knott  
Mara Knuble  
Peter Kroening (In Memory of William Klein)  
Mary Ann Lentz  
Susan Lindahl  
Camilla Martin  
John and Patricia McCabe  
Jean McCormick  
Mary McGrath  
Gene and Linda Michaels  
Glenda Middleton

Emily Mitchell  
Chrysteen Moelter-Grey  
Clarice May Mulder  
Lynette Mundwiler  
Suzanne Naas  
Mark and Kathleen Newman  
Steven Norkus  
Sue O'Brien  
Norma Oliver  
Dennis O'Neill  
Joan Parker  
Janet Patsakos  
Gerrit and Janet Peddemors  
Linda Pepper  
Marjorie Peterson  
Marie Powers (In Memory of Mary Storck)  
Winifred Punt  
Kyle Purdy  
Jeff and Jim Ridings  
Kathleen Ringeisen  
Rolling Greene Condominium Association (In  
Memory of Vicki Lee Bliss)  
Robert and Sue Ruby  
Andrew and Sarah Rugg (In Memory of  
Gale Traywick)  
Aaron and Rachel Sanders

## **DR. SEUSS SOCIETY (Continued...)**

Andy Saur  
Peggy Serulla  
Janet Simpson  
Ray and Elizabeth Skeins  
Brian and Sandy Stone  
Nancy Swift  
Frank Tally (In Memory of Gale Traywick)  
Kathryn Taylor

Mary Tracey  
Judith Ullery  
Ardythe VanderVelde  
Grace Vegter  
Kenneth and Carol Wagner  
Patricia Walcott  
Ona Wall  
Ruth Watson

Karin Wier  
Judith Wietsma  
Charles and Jane Willekes  
Lorraine Demorest Wood  
Mary Wray  
William and Mary Yost  
Clasina Young

## **DONATIONS TO KDL BRANCHES**

We gratefully acknowledge those gifts given specifically to Kent District Library branches from January 1 – December 31, 2013. These gifts support branch programming and services.

### **SHAKESPEARE SOCIETY (GIFTS OF \$10,000+)**

Friends of the Cascade Township Library  
Friends of the East Grand Rapids Library  
Friends of the Grandville Library

### **DICKENS SOCIETY (GIFTS OF \$1,000+)**

Guido A. and Elizabeth H. Binda Foundation  
City of Grandville  
Friends of the Wyoming Library  
Grandville Downtown Development Authority  
Grandville Rotary Club  
Target Corporation  
Wyoming Public Schools

### **POE SOCIETY (GIFTS OF \$250+)**

Carpe Librum (In Memory of Norma Sprague)  
Casnovia-Kent City Lion's Club  
Elders Electric  
Friends of the Caledonia Township Branch  
Friends of the Kentwood Library

### **ALCOTT SOCIETY (GIFTS OF \$100+)**

Michael and Julie Bemben  
Vern and Norma Boss  
Grandville Ladies' Literary Club (In Memory of Donna Nyman)  
Scott and Molli Hartel  
Laurian Hasselwander (In Memory of Norma Sprague)  
Kiwanis Club of Byron Center  
Tom Long

### **HEMINGWAY SOCIETY (GIFTS OF \$50+)**

Martha Brooks  
Galaxy Pizza  
Ruth Hagan (In Memory of Gale Traywick)  
Stan and Jan Powers (In Memory of Luci King)  
Jason and Shannon Rop  
Stephanie Sanderson  
John and Beth Simmons (In Memory of Ellen Wilder)

### **AUSTEN SOCIETY (GIFTS OF \$5,000+)**

Friends of the Plainfield Township Library

### **TWAIN SOCIETY (GIFTS OF \$2,500+)**

Alto Downtown Development Authority

### **STEINBECK SOCIETY (GIFTS OF \$500+)**

Alpine Township  
Cook Family Services  
David Cramer, D.D.S.  
Friends of the Spencer Township Library  
Friends of the Walker Library  
Kristin and Amy Smith

Grand Rapids Community Foundation  
(Douglas Leon Spalding Memorial Fund)  
Highlands Middle School  
Michigan Blood  
Northview Public Schools  
Rockford Sportsman Club

Sharon Lutz-Krebill  
Marge's Donut Den  
Julia Smith  
Gordon and Esther Start  
Everett and Gloria Swanson  
Trudy Vermaire  
Weller Auto Parts

Carol Simpson  
Jeffrey and Melinda Smith (In Memory of Ellen Wilder)  
Jay Stevens Salon  
Peter and Judith Titta (In Memory of Katherine Williamson)  
Scott and Sylvia Wormmeester  
Wyoming Branch Staff  
Cynthia J. Zientarski (In Memory of Ellen Wilder)



### **DR. SEUSS SOCIETY (GIFTS OF \$1+)**

Mike Bishop	Luci King
Elizabeth Bovard	David and Jeanette Meyer
Terry and Robin Darling	Jack and Patti Peltier (In Memory of Mayor Richard Root)
Barb DeYoung	Angie Pope
Donna Dorey (In Memory of Lois Dewald)	Rogue River Readers' Book Club (In Memory of Jerry Davis)
Joyce Fick (In Memory of Bertel D. Kelly)	Janice Rowland (In Memory of Michael B. Handlin and Bruce Miller)
Grandville Ladies' Literary Club (In Memory of Gladys Kapenga)	Else Sorensen
Dennis and Flora Hautau (In Memory of Marion Robinson)	Denise Veldt
Jones Auto Parts (In Memory of Jack Nelson)	Vergennes Co-Operative Club
Cathleen Kaiser (In Memory of Pat Kaiser)	Karen Weeks (In Memory of Beatrice Rathbun)
Kentwood Cat Clinic	Penny Weller (In Honor of David Stracke and Laura Weld)

### **LEROY CARTER MEMORIAL DONATIONS (*East Grand Rapids Branch*)**

Robin Bauer	John and Marilyn Drake
Joseph and Barbara Boland	Regis Halgren
Jan Bredeson	Walter and Joan Hill
Anita Carter	Barbara Hohman
Verle and Janet Carter	Wendy Larson
Deb Clark	Mary M. Leigh
Peter and Carol Cordes	Judith Schneider
Robert and Joanne Daun	Sonia E. Speakman

### **BARBARA CHAMPION MEMORIAL DONATIONS (*Cascade Township Branch*)**

Burton and Mary Bouwkamp	Thomas and Sandra Levand
Cascade Community Foundation	John and Faye Miller
Angie Gilder	Janet Thompson
Jane Hardwicke	

### **MARY ANN GWATKIN MEMORIAL DONATIONS (*Englehardt Branch*)**

Michael and Jeanne Arehart	Bruce Munroe
Ball Rentals	Richard and Nancy Paff
Donald and Flora Beachum	Charles and Maureen Richardson
Robert E. Collins	Lloyd Ritzema
Dolores Doyle	Vergennes Co-Operative Club
Gary and Sharon Eickhoff	

### **THOMAS PARKER MEMORIAL DONATIONS (*Walker Branch*)**

Ann Constance	John and Cheryl Tully
Mark and Betty Krauss	David and Denise Overbeek
Jonathan and Nancy Macks	Sara VanderWerff

### **FRANCES BAKER SMILEY MEMORIAL DONATIONS (*Krause Memorial Branch*)**

Dave Baker	Roger and Danna Ferris
Diane Baker	Lazelle Gill
Eric and Maria Baker	Tom Rademacher
Kevin and Kari Baker	

Kent District Library makes every effort to provide accurate information in this donation report. If you are aware of an error or omission, please contact Linda Krombeen at (616) 784-2092 or [lkrombeen@kdl.org](mailto:lkrombeen@kdl.org).

# Branch Hours

## ALPINE TOWNSHIP BRANCH

5255 Alpine Ave. NW, Comstock Park 49321

### OPEN HOURS

SUN	MON	TUE	WED	THU	FRI	SAT
	12:00 to 8:00	9:30 to 5:00	12:00 to 8:00		1:00 to 5:00	9:30 to 1:30

## ALTO BRANCH

6071 Linfield Ave., Alto 49302

### OPEN HOURS

SUN	MON	TUE	WED	THU	FRI	SAT
	9:30 to 1:30	12:00 to 8:00	12:00 to 8:00	1:00 to 5:00		9:30 to 1:30

## BYRON TOWNSHIP BRANCH

8191 Byron Center Ave. SW, Byron Center 49315

### OPEN HOURS

SUN	MON	TUE	WED	THU	FRI	SAT
	12:00 to 8:00	9:30 to 8:00	9:30 to 5:00	12:00 to 8:00	9:30 to 5:00	9:30 to 5:00

## CALEDONIA TOWNSHIP BRANCH

6260 92nd St. SE, Caledonia 49316

### OPEN HOURS

SUN	MON	TUE	WED	THU	FRI	SAT
	9:30 to 5:00	12:00 to 8:00	9:30 to 5:00	12:00 to 8:00		9:30 to 5:00

## CASCADE TOWNSHIP BRANCH

2870 Jacksmith Ave. SE, Grand Rapids 49546

### OPEN HOURS

SUN*	MON	TUE	WED	THU	FRI	SAT
1:00 to 5:00	9:30 to 8:00	9:30 to 8:00	9:30 to 8:00	9:30 to 8:00	9:30 to 5:00	9:30 to 5:00

\*Closed Sundays in summer (Memorial Day to Labor Day).

## COMSTOCK PARK BRANCH

3943 W. River Dr. NE, Comstock Park 49321

### OPEN HOURS

SUN	MON	TUE	WED	THU	FRI	SAT
	9:30 to 8:00	12:00 to 8:00	9:30 to 5:00	12:00 to 8:00	1:00 to 5:00	1:00 to 5:00

## EAST GRAND RAPIDS BRANCH

746 Lakeside Dr. SE, East Grand Rapids 49506

### OPEN HOURS

SUN*	MON	TUE	WED	THU	FRI	SAT
1:00 to 5:00	9:30 to 8:00	9:30 to 8:00	9:30 to 8:00	9:30 to 8:00	9:30 to 5:00	9:30 to 5:00

\*Closed Sundays in summer (Memorial Day to Labor Day).

## ENGLEHARDT BRANCH

200 N. Monroe St., Lowell 49331

### OPEN HOURS

SUN	MON	TUE	WED	THU	FRI	SAT
	12:00 to 8:00	12:00 to 8:00	12:00 to 8:00	9:30 to 5:00	9:30 to 5:00	9:30 to 1:30

## GAINES TOWNSHIP BRANCH

421 68th St. SE, Grand Rapids 49548

### OPEN HOURS

SUN	MON	TUE	WED	THU	FRI	SAT
	12:00 to 8:00	9:30 to 8:00	9:30 to 5:00	12:00 to 8:00	9:30 to 5:00	9:30 to 5:00

## GRANDVILLE BRANCH

4055 Maple St. SW, Grandville 49418

### OPEN HOURS

SUN	MON	TUE	WED	THU	FRI	SAT
	9:30 to 8:00	9:30 to 8:00	9:30 to 8:00	9:30 to 8:00	9:30 to 5:00	9:30 to 5:00

## KENTWOOD (RICHARD L. ROOT) BRANCH

4950 Breton SE, Kentwood 49508

### OPEN HOURS

SUN*	MON	TUE	WED	THU	FRI	SAT
1:00 to 5:00	9:30 to 8:00	9:30 to 8:00	9:30 to 8:00	9:30 to 8:00	9:30 to 5:00	9:30 to 5:00

\*Closed Sundays in summer (Memorial Day to Labor Day).

## KRAUSE MEMORIAL BRANCH

140 E. Bridge St., Rockford 49341

### OPEN HOURS

SUN	MON	TUE	WED	THU	FRI	SAT
	9:30 to 8:00	12:00 to 8:00	5:00	12:00 to 8:00	9:30 to 5:00	9:30 to 5:00

## PLAINFIELD TOWNSHIP BRANCH

2650 5-Mile Rd. NE, Grand Rapids 49525

### OPEN HOURS

SUN*	MON	TUE	WED	THU	FRI	SAT
1:00 to 5:00	9:30 to 8:00	9:30 to 8:00	9:30 to 8:00	9:30 to 8:00	9:30 to 5:00	9:30 to 5:00

\*Closed Sundays in summer (Memorial Day to Labor Day).

## SAND LAKE/ NELSON TOWNSHIP BRANCH

88 Eighth St., Sand Lake 49343

### OPEN HOURS

SUN	MON	TUE	WED	THU	FRI	SAT
	12:00 to 8:00	9:30 to 5:00	12:00 to 8:00		1:00 to 5:00	9:30 to 5:00

## SPENCER TOWNSHIP BRANCH

14960 Meddler Ave., Gowen 49326

### OPEN HOURS

SUN	MON	TUE	WED	THU	FRI	SAT
		12:00 to 8:00	1:00 to 5:00	12:00 to 8:00		9:30 to 1:30

## TYRONE TOWNSHIP BRANCH

43 S. Main St., Kent City 49330

### OPEN HOURS

SUN	MON	TUE	WED	THU	FRI	SAT
		12:00 to 8:00	9:30 to 5:00	4:00 to 8:00	1:00 to 5:00	9:30 to 1:30

## WALKER BRANCH

4293 Remembrance Rd. NW, Walker 49534

### OPEN HOURS

SUN	MON	TUE	WED	THU	FRI	SAT
	9:30 to 8:00	9:30 to 8:00	9:30 to 5:00	9:30 to 8:00	9:30 to 5:00	9:30 to 5:00

## WYOMING BRANCH

& the Library for the Blind  
and Physically Handicapped

3350 Michael Ave. SW, Wyoming 49509

### OPEN HOURS

SUN*	MON	TUE	WED	THU	FRI	SAT
1:00 to 5:00	9:30 to 8:00	9:30 to 8:00	9:30 to 8:00	9:30 to 8:00	9:30 to 5:00	9:30 to 5:00

\*Closed Sundays in summer (Memorial Day to Labor Day).

**KDL SERVICE CENTER**, 814 West River Center Dr. NE, Comstock Park, MI 49321

# 616-784-2007

18 locations, 1 convenient phone number.

Long distance call 1-877-243-2466.

**KDL** Information.  
Kent District Library Ideas.  
*Excitement!*