



Kent
District
Library



Community Report 2025



Kent
District
Library



We exist to further all people.

Shovels and Ribbons	4-5
2025, Month by Month	6-19
Strategic Plan	20-21
2025 by the Numbers	22-23
Return on Investment.....	24
Peer Comparison	25-27
Service Area Map	28

On the cover: Early in 2025, Mychal Threets, who has since become the new host of *Reading Rainbow* and Resident Librarian of PBS, spent a day with the KDL team to help celebrate a banner year of awards with his inspiring message of love and literacy.

Kent District Library is a public library system operating 20 branch libraries, an Express Library and a Bookmobile that serves more than 439,000 residents of 27 different municipalities throughout Kent County. KDL enriches lives by providing information, ideas and excitement. It is an IRS-designated 501(c)(3) nonprofit supported by millage dollars and private donations. KDL is a member of the Lakeland Library Cooperative. For more information, visit kdl.org.



This past year has included groundbreakings, ribbon cuttings, record-setting OverDrive/Libby circulation and more, all in the name of public service to the community. While it seems that I've been wearing a hard hat a lot of the time, I've also spent a tremendous amount of time with our KDL team, partner organizations and legislators in order to keep our course focused on furthering all people.

KDL's accomplishments in 2025 are summarized in this report, and, more importantly, they have added to a foundation for the future. Thank you for being part of making this possible and casting a great future for our community.

With gratitude,

Lance Werner
Executive Director

Shovels and Ribbons

This year marked a series of milestones that expanded spaces, services and impact across our communities.



Groundbreaking in September for the expansion of the Krause Memorial Branch in Rockford.



October ribbon cutting for the new mural at the Byron Twp. Branch.



Ribbon cutting in July for the renovation of the Cascade Twp. Branch.



October ribbon cutting for the park renovation and new Storywalk® at the Comstock Park Branch.

2025, Month by Month

JANUARY

Amanda Schrauben and Norma VerHeulen were appointed to the Board of Trustees of the Kent District

Library by the Kent County Board of Commissioners.

Schrauben represents Region 4, which includes the City of

Lowell and Bowne, Lowell and Vergennes Townships. VerHeulen represents Region 3, which includes the City of Walker and Alpine and Plainfield Townships.



Amanda Schrauben



Norma VerHeulen

To support our mission of fostering inclusivity and ensuring that all community members have access to information, resources and programs, **we began offering interpretation equipment kits** that can be borrowed by our patrons.

To learn more or borrow, email CommunityEngagementEmail@kdl.org or call 616.784.2007.



During the week of Jan. 20, **KDL hosted a series of powerful reflections and action that supported the legacy of the Rev. Martin Luther King Jr.** in an inspiring way. The week included a movie viewing, programs and book discussions.



FEBRUARY

Digital checkouts reached

1,953,261 on the Libby app in 2024, a milestone that underscores the community's embrace of digital reading. Libby, the library reading app, enables library patrons to access a vast collection of ebooks, audiobooks and digital magazines for free with a library card on devices including laptops, smartphones, tablets and certain ereaders. In 2023, KDL had 1,670,563 checkouts via Libby, representing a 17% increase.



KDL declared the winners of the thirteenth annual Write Michigan Short Story Contest. Over 1,000 writers from across the state entered the contest in three age groups – 418 adults, 272 teens and 350 youth.

We accepted entries to our annual Write Michigan Teen Poetry Contest, open to teens in grades 6-12 who live or go to school in Kent County. This was a great opportunity for teens to share their writing and win a cool prize.

MARCH

2025 marked the 20th anniversary of the Michigan eLibrary Catalog (MeLCat) and inter-library loan service. Over the past two decades, the service has grown from 12 member libraries to more than 435. MeLCat has amassed holdings of over 34 million items. Kent District Library has been a proud member of MeLCat since 2008. During our participation, KDL has borrowed over 350,000 items for patrons.

As part of our KDL Gives Back program, we accepted toiletry donations at all 20 KDL branches. These full-size personal care items supported the Women's Resource Center as they equip women for workplace success.

KDL's Seed Library provided patrons with 10,783 sample packets of vegetables, fruits, herbs, grains and flowers, which is an increase of 23% over the prior year.

KDL's Seed Library promotes sustainability, healthy habits and environmental awareness. Seeds were available at all KDL branches and on the Bookmobile. The One Seed, One State selection, Little Finger Carrot, was donated by the Michigan Seed Library Network.

Kent District Library and the KDL Board of Trustees announced the two recipients of the KDL Community Impact Scholarship. Jamie Elgrably and Ania Fleszar each received \$5,000 to further their education. The award recognizes high school seniors and adults returning to school who have worked hard to improve their communities and show potential to make long-term impact.



Jamie Elgrably



Ania Fleszar





*"Great books help you understand,
and they help you feel understood."*

- John Green

*"Poetry very literally, unhyperbolically
saved my life... I think it's an honor to
get to spend my life in service to the
thing I love best."*

- Kaveh Akbar

We celebrated the success of our Let It Snow winter reading challenge with 2,809 completers, who each earned a mug, and almost 1,500 power readers, who were entered into a prize drawing. Over 22,854 books were read. We had a lot to celebrate!

APRIL

For the families that stayed home for spring break, the library made their time at home fun and special. KDL hosted programs for adults, families, school-age kids and teens, making Spring Break staycations feel like a real vacation.

During National Financial Literacy Month, **Kent District Library introduced our new financial literacy themed GO! Packs.** These packs contain games and activities that encourage people to gain financial skills while having fun! These new packs were funded by our friends at Centennial Securities. We are so grateful for their support.

We held our big **On the Same Page Author Event** featuring John Green and Kaveh Akbar at the Godwin Heights High School Auditorium!

MAY

The **Write Michigan Teen Poetry Contest received 161 entries**, and we were so impressed by the level of talent on display.

During High Blood Pressure Awareness Month, **we encouraged patrons to check out a blood pressure kit** from KDL. They are free, easy to use and could make a big difference for your heart.

We introduced the new Adaptive Technology Lab at the KDL Service & Meeting Center, a space designed to break down barriers and open new possibilities for patrons with visual, physical and learning disabilities.



New Financial Literacy GO! Packs, made possible through the support of Centennial Securities.



New Blood Pressure Monitor GO! Packs, made possible through the support of the American Heart Association.

JUNE

Kent District Library kicked off Summer Wonder, taking patrons on a journey of reading, learning and experiencing! It was a spectacular summer of outdoor discovery, scavenger hunts, reading, STEAM activities and lots of fun for everyone. Summer Wonder ran from June 2 – August 8.

KDL's Talking Book & Braille Center (TBBC) was honored as the 2025 Library of the Year by the National Library Service for the Blind and Print Disabled (NLS), a division of the Library of Congress. This prestigious national award recognizes TBBC's exceptional commitment to serving readers with visual, physical or print disabilities across Kent, Ionia and Montcalm counties.

Several KDL branches and the Bookmobile partnered with Feeding America West Michigan to **provide no-cost lunches** for youth ages 0-18 and adults with disabilities through age 26. The meals were available “grab ‘n’ go” style on weekdays throughout the summer.

We added new titles to our CORE Collections! These collections, available at all KDL branches, consist of 100 of the top circulating, perennially-popular titles KDL has to offer. No holds are allowed, so you are practically guaranteed to find a good read.

The Comstock Park Branch, along with many community partners, celebrated some great additions to Dwight Lydell Park, including a new StoryWalk! A StoryWalk® is an innovative concept that combines reading with outdoor activity. Pages from a children's book are displayed along a walking path, allowing visitors to read a story while enjoying a stroll.



KDL received recognition at the National Library Service for the Blind & Print Disabled Library of the Year Award Ceremony at the Library of Congress Jefferson Building in Washington, DC. From left to right: Jason Broughton - NLS Director, Robin Dale - Deputy Librarian for Library Collections and Services (Library of Congress), Robert Newlen - Acting Librarian of Congress, Rep. Hillary Scholten, Shelley Roossien - Accessibility & Inclusion Specialist at KDL, Morgan Hanks - User Experience Manager at KDL and Jason Yasner - NLS Deputy Director

Welcome to
STORYWALK®
at Dwight Lydell Park

StoryWalk® is a fun, educational activity that places a storybook along a popular community walking trail. StoryWalk® was created to help build children's interest in reading while enjoying a healthy, physical activity.



STORYWALK® at Dwight Lydell Park

Brought to you by the Comstock Park Branch of Kent District Library
and the Comstock Park Rotary Club.

The StoryWalk® Project was created by Anna Ferguson of Thompson, VT and developed in collaboration with the Vermont State & Federation of Library and the Kellogg Museum Library. StoryWalk® is a registered service mark owned by the Ferguson.

Special thanks to



JULY

KDL announced a new Teen Graphic Novel Contest.

Entries were accepted from July 1 – August 31 at kdl.org/teengraphicnovel. Teens shared their artwork and stories, and there were some great prizes up for grabs. The top 10 graphic novels were published in an anthology.

After months of anticipation, the **newly renovated Cascade Twp. Branch opened its doors**. The public was invited to join Cascade Township, Kent District Library and project partners for a grand opening celebration and ribbon cutting ceremony.

The Cascade Twp. and Kentwood Branches **hosted a program for all Pete the Cat lovers**. Eric Litwin, the original author of the Pete the Cat series, **visited** for a groovy time of song singing, guitar strumming and picture taking!

AUGUST

In 2025, we reached a record-breaking number of Summer Wonder completers. With a focus on offsetting the “summer slide” that happens during the summer when kids lose a significant portion of what they learned in school, it’s great news that this initiative keeps growing.

KDL **launched a blog series on Artificial Intelligence**, where we break down big ideas into simple, practical insights. See kdl.org/ai for more information.



The renovated Cascade Twp. Branch was met with a huge crowd of appreciative patrons and staff.



We hosted the third season of Concerts for the Community, a partnership between KDL and the Steve and Amy Van Andel Foundation. The program is designed to provide concert tickets to world-class performances for community members who might not otherwise have the opportunity to attend due to barriers such as poverty, disability, mental health needs or other barriers. Throughout the Fifth Third Summer Concert Series at Frederik Meijer Gardens, 476 people from across Kent County attended concerts with free transportation, food, chair rentals, KDL goodies and return passes to the Gardens.

SEPTEMBER

The satisfying sound of a library stamp made a comeback at Kent District Library with our **Stampworthy Adult Reader Cards**. Stampworthy is a celebration of reading, community and a little old-school fun. Each time people visited a KDL branch and checked out five or more items, they received a stamp on their Stampworthy card. When they collected five stamps, they were entered to win a \$50 ShopKDL gift card, plus other prizes donated by local businesses.



Photo credit: Tommy Allen/Rapid Growth

Kent District Library launched the fourteenth annual Write Michigan Short Story Contest. Michigan writers of all ages were invited to enter, with separate categories for youth, teens and adults. Winning entries were published and the top writers received cash prizes.

KDL celebrated the return of Legendary Readers, a simple and fun reading program designed to help children develop a lifetime love of reading and learning. Participants in grades K-5 were asked to read, write or visit the library for 100 days throughout the school year, outside of the classroom. Legendary Readers has a cryptid theme, and completers won a cool Bigfoot flashlight and were entered to win the grand prize of one of ten \$100 gift cards to Schuler Books.



KDL kicked off the fall season with a Vibes Fest music festival at the Cascade Twp. Branch celebrating some favorite West Michigan artists from the KDL Vibes collection. Attendees chatted with other music fans, heard some of their favorite local musicians and got introduced to their next favorite band – all while hanging out at the library.

The Wyoming Branch hosted Elect Her. Attendees learned campaign strategy and leadership skills like public speaking and networking in a non-partisan training session designed to give women the confidence and skills needed to run for office.

Kent District Library and World Affairs Council of Western Michigan partnered to present Living Better in West Michigan: A Global Health Perspective. Participants explored the factors that lead to people living longer lives here and in other parts of the world and how increased knowledge of healthcare systems can help us address the real health needs in our communities.





KDL partnered with Fig and Friends Pet Rescue to help animals find loving homes. Patrons donated pet supplies, food and treats to show some love to our furry friends. Every donation made a difference for cats and dogs waiting for their forever families.

We hosted our annual KDL Lab Expo! Local organizations and businesses showcased how they use STEAM in their profession. They brought amazing activities like competition-level robots, derby racing, wind tunnels and more for attendees to experience. The Expo also included crafting, dissecting, building, button-making and experimenting!

OCTOBER


We began accepting nominations for the third Literacy Champion Award for outstanding leadership and advocacy of literacy. The award goes to one individual and one organization who does or has done something exceptional to promote literacy. Winners receive \$1,000, a crystal trophy and public recognition.

Two KDL branches hosted a Write Michigan Day of Learning, which included sessions for professional learning and networking to further develop writing skills and industry knowledge from industry experts.

There were 61 gorgeous photos submitted to this year's Teen Photo Challenge, and we were so impressed by the talent displayed by the teens in our county.

The Friends of the Byron Twp. Library helped to transform the drab brown wall in the Clara C. Cheyne program room at the Byron Twp. Branch into a work of whimsy and joy. Local Artist Christina Hutton created the outline of a beautiful mural, and a giant paint-by-number was born, with families and other visitors becoming artists, too. The mural sparked storied moments created by painting together and being in a shared space. It's already encouraging learning skills through color and shape recognition by young children





and through offering a free space to appreciate art and make meaning from it to all ages. We hope the mural inspires other artists, writers, observers and library visitors in the years to come.

NOVEMBER

We welcomed Ashten VanderPloeg to her new role as Regional

Manager II at the Cascade Twp. and Caledonia Twp. Branches.

She provides direct and indirect supervision of all branch staff and is responsible for day-to-day circulation operations and implementation of policy and procedural changes.



To help combat uncertainties and loss of full or partial food access, **KDL collected nonperishable food items as part of KDL Gives Back.** Donations were accepted at all KDL branches and were distributed to food pantries and organizations across the county.

DECEMBER

The Let It Snow winter reading challenge returned!

Adults and teens (age 11+) who read or listened to six books between December 1 and February 27 earned a collectible Let It Snow mug.

KDL once again participated in Toys for Tots to help spread some holiday cheer. Patrons and staff donated new, unwrapped toys at all KDL branch. Sponsored by the U.S. Marines, Toys for Tots delivers new toys to children throughout our communities.

We held a Draw the Yeti contest and encouraged patrons of all ages to bring our Let It Snow mascot to life. We had over 100 drawings submitted and winners won movie passes.

KDL and the Board of Trustees began accepting nominations for a \$5,000 **KDL Community Impact Scholarship** to recognize high school seniors and adults returning to school who have worked hard to improve their communities and show potential to make long term impact. Both trade-bound and college-bound students are eligible to apply.



Strategic Plan: 2025 Annual Initiatives

Our strategic plan is guided by three focus pillars, supported by a cascading framework that connects systemwide priorities to daily work. In 2025, each pillar included two initiatives led by cross-functional teams, helping all staff keep strategic priorities front and center.

STRENGTHENING COMMUNITY

Community partnerships were strengthened and aligned through an evaluation of active partnerships to clarify shared goals and reciprocity. A standardized partnership intake process was implemented to prioritize relationships at both the branch and system levels, resulting in new partnership opportunities and the streamlining or conclusion of partnerships. “Who Is My Community” maps and summaries were created for all 20 branches, increasing staff awareness of key partners and supporting more intentional community engagement.

School partnerships were expanded and deepened through the development and implementation of a standardized school outreach menu across 16 public school districts. Outreach activities reached students and educators while establishing clear preparation expectations and designated outreach periods to support sustainable service delivery.

TECHNOLOGY

Technology support for staff and the public was enhanced to increase capacity in technology instruction, including emerging technologies such as artificial intelligence. Improvements continue to be developed for service desk interactions, one-on-one appointments and updated tech tutoring services aligned with the Michigan Digital Equity Strategy to reduce barriers to digital access and skills development.

eGaming labs at three branches informed service planning and resource allocation. Offered to all ages, these structured sessions supported learning and social engagement and were incorporated into summer STEAM programming through facilitated programs



Strengthening Community

Technology

and open sessions. By promoting collaboration and exposure to technology-related learning, this initiative strengthens awareness of potential career pathways and is becoming a sustained service.

CORE PROGRAMMING

Charters for these initiatives were created and work began in 2025, with completion expected in 2026.

Program visibility and repeat engagement are being strengthened through the implementation of a systemwide framework for cross-promotion and invite-back strategies across in-person programs. These efforts build on record-setting attendance to increase library visits, circulation and cross-program participation.

Long-term program quality and sustainability are being increased by defining clear program pathways and establishing a regular review cycle. Four program evaluations are currently underway to enhance relevance, consistency and alignment with organizational goals.

ADDITIONAL STRATEGICALLY ALIGNED PROJECTS COMPLETED IN 2025 INCLUDE:

- Implementing LibCal for managing Book Club in a Bag reservations
- Creating a sustainability plan for free printing services
- Establishing a consistent, systemwide approach to branch visitor engagement
- Balancing collections using the new central sorter
- Transitioning *On the Same Page* into its second year under the Adult Programming Workgroup
- Launching Legendary Readers as a replacement for Mission: READ!

For details on these or other strategic initiatives, visit kdl.org/about/policies-reports.

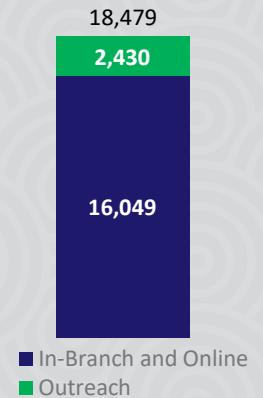
Core Programming

2025 by the Numbers

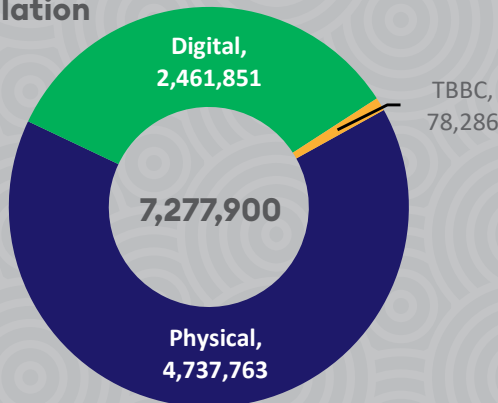
Active Library Cards



New Library Cards



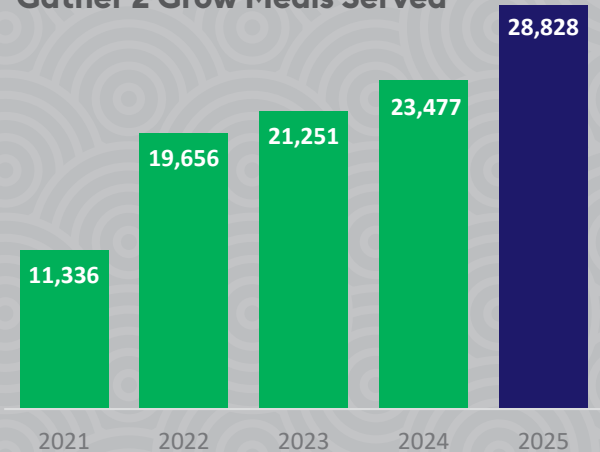
Circulation



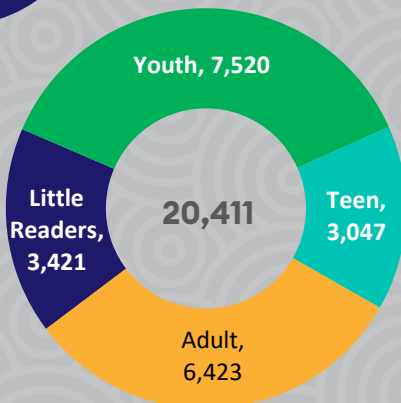
Visitors



Gather 2 Grow Meals Served



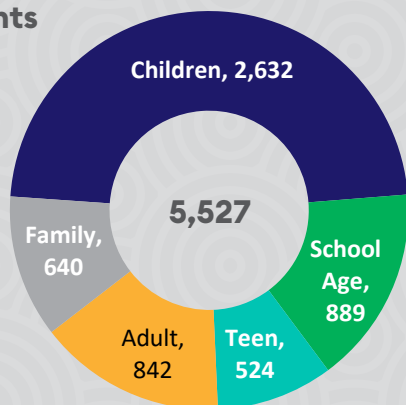
Summer Wonder Completers



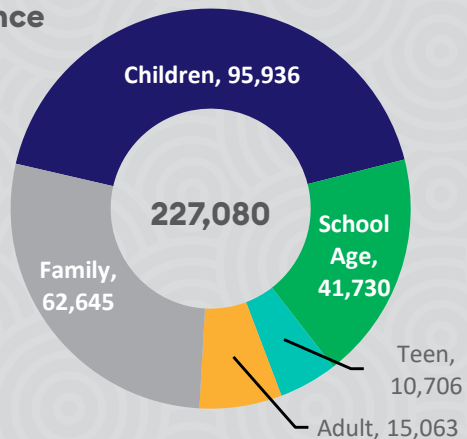
Website Visits 3,457,907
 Mobile Application Unique Users 19,744
 “What’s Next” Sessions 94,565
 Database Sessions 31,731
 eNews Subscribers 148,611
 Social Media Followers 105,016

Programs

Events

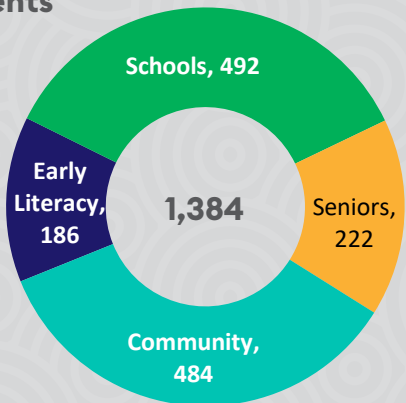


Attendance

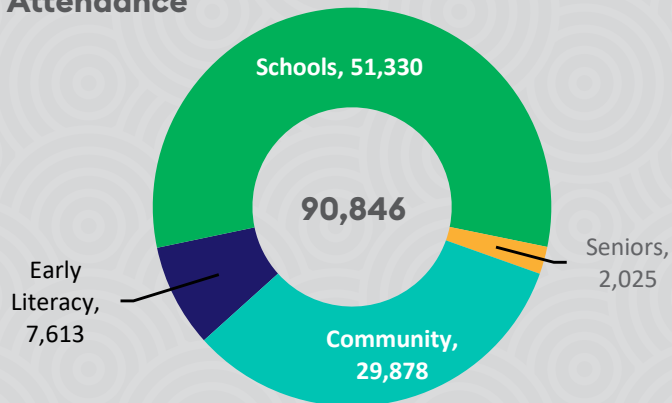


Outreach

Events



Attendance



181,821
PC Logins



677,640
WiFi Logins



111,832
Print Sessions



8,941
Fax Sessions



Staff 325
FTEs 244
Volunteer
Hours ... 7,400

Return on Investment

Library users saved \$99,004,733 in 2025 by checking out physical materials and digital items. The return on investment for taxpayers is much greater when you add the value derived from using computers, printers, study rooms, programs, outreach services, online databases and the personal service of library staff.

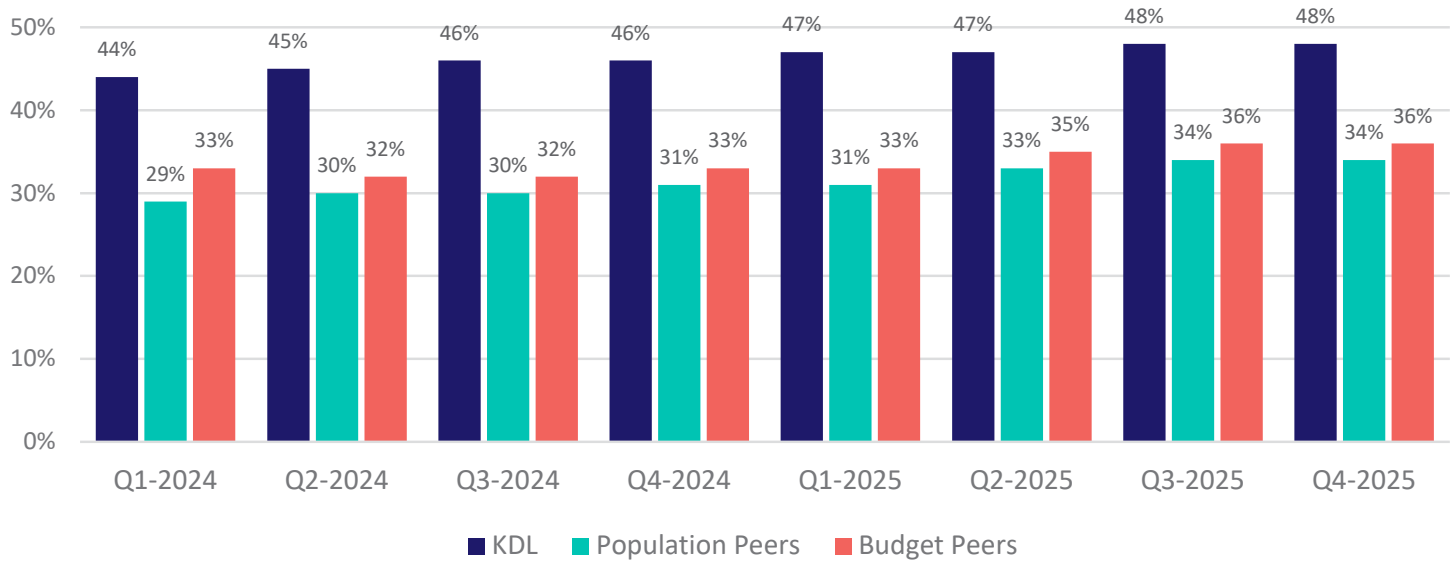
	2024	2025
Physical Items Checked Out (does not include renewals)	2,769,864	2,610,028
Total Estimated Value of Physical Items Checked Out	\$56,328,452	\$54,120,006
Users Who Checked Out Physical Items	82,156	78,549
Average Value per User for Physical Items	\$686	\$689
Digital Items Checked Out	2,636,775	2,461,851
Total Estimated Value of Digital Items Checked Out	\$42,544,895	\$44,884,727
Users Who Checked Out Digital Items	60,878	61,648
Average Value per User for Digital Items	\$699	\$728
Total Estimated Value	\$98,873,347	\$99,004,733
Total Average Value per User for Physical and Digital Items	\$1,385	\$1,417

Peer Comparison

National 2024-2025 OrangeBoy Savannah Data

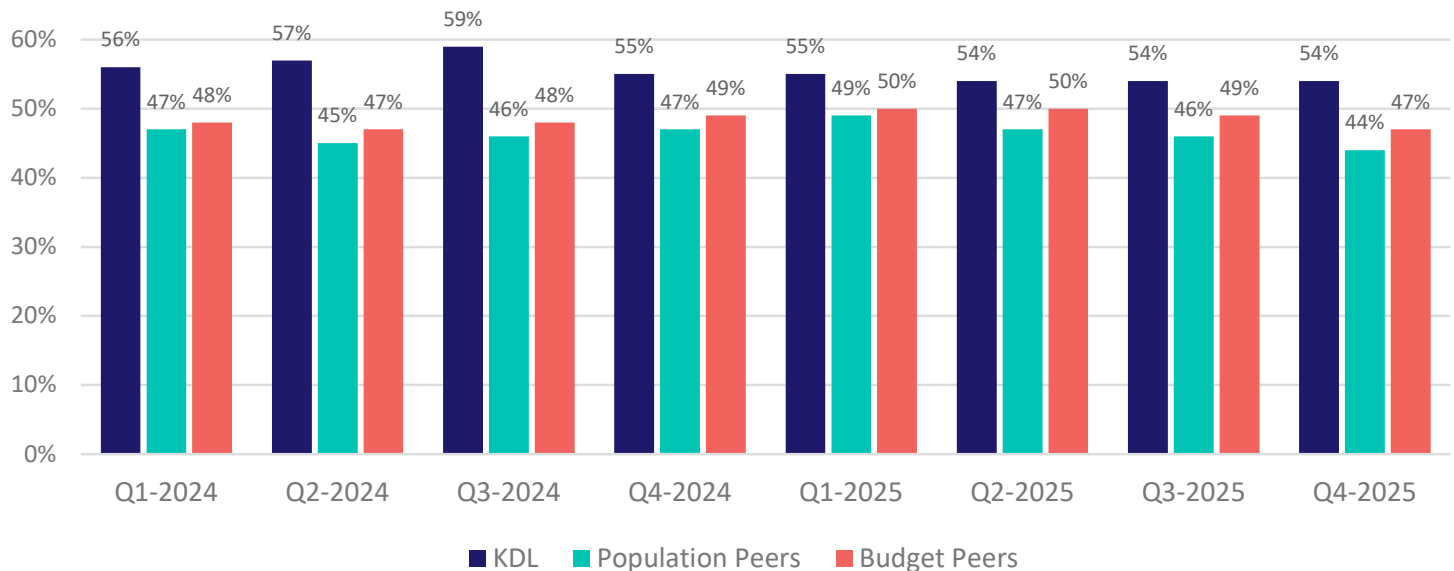
Market Share:

Households in the library's service area with library cards that have been used within the past 12 months.



New Cardholder Retention:

New library cards that remain active after the first year of being issued.



Peer Comparison – National (2023 Institute of Museum and Library Services data)

<i>Kent District Library ranks in the top three for program attendance, library visits and physical circulation per capita compared to budget and population peer libraries.</i>					Per Capita Data								
Library	City	ST	Population of Legal Service Area	Total Operating Expenditures (millions)	Operating Expenditures	Physical Circulation	Circulation of Electronic Materials	Library Visits	Program Attendance	Public Internet Users	Wi-Fi Sessions	Books	Collection Expense
Kent District Library	Comstock Park	MI	439,194	\$28.4	\$65	11.5	3.8	4.5	0.7	0.3	2.1	1.3	\$10
Population (+/- 25,000)			KDL Rank >	7th	7th	2nd	4th	2nd	2nd	5th	5th	10th	5th
Long Beach Public Library	Long Beach	CA	458,222	\$18.3	\$40	1.6	0.6	1.4	0.1	0.2	0.4	1.4	\$3
Virginia Beach Public Library	Virginia Beach	VA	454,335	\$19.2	\$42	3.2	1.3	1.8	0.2	0.1	0.0	1.0	\$4
Santa Clara County Library	Campbell	CA	454,040	\$56.9	\$125	17.8	6.4	4.6	0.4	0.3	3.0	3.4	\$17
Dayton Metro Library	Dayton	OH	452,238	\$37.7	\$83	6.7	5.5	4.1	0.4	0.7	1.5	1.7	\$11
New Castle County Libraries	New Castle	DE	448,998	\$19.3	\$43	4.6	1.0	2.3	0.2	0.2	0.3	1.6	\$3
East Baton Rouge Parish Library	Baton Rouge	LA	448,467	\$47.1	\$105	3.4	2.8	3.8	0.7	0.7	2.0	2.9	\$15
Dakota County Library	Eagan	MN	447,440	\$15.0	\$34	9.1	3.1	3.0	0.1	0.3	8.8	1.3	\$5
Oakland Public Library	Oakland	CA	442,959	\$45.5	\$103	5.1	1.7	2.7	0.3	0.2	0.1	2.0	\$7
Manatee County Public Library System	Bradenton	FL	439,446	\$10.8	\$24	2.4	0.8	1.6	0.2	0.1	1.7	0.8	\$3
Seminole County Public Library System	Casselberry	FL	439,330	\$8.4	\$19	3.0	0.9	2.8	0.2	0.1	0.6	1.1	\$3
Osceola Library System	Kissimmee	FL	438,923	\$7.6	\$17	1.8	0.5	1.4	0.1	0.3	4.8	0.4	\$2
Live Oak Public Libraries	Savannah	GA	438,248	\$11.6	\$27	1.7	0.3	1.4	0.2	0.3	1.3	0.9	\$2
Greensboro Public Library	Greensboro	NC	434,234	\$10.2	\$24	2.5	1.6	2.3	0.1	0.3	0.0	0.8	\$2
Toledo-Lucas County Public Library	Toledo	OH	428,505	\$45.7	\$107	9.4	4.3	4.4	0.2	0.8	2.6	2.8	\$12
Monmouth County Library	Manalapan	NJ	425,110	\$14.5	\$34	4.5	1.5	1.8	0.2	0.1	0.1	3.3	\$6
Jefferson Parish Library	Metairie	LA	421,777	\$23.2	\$55	1.7	1.1	2.6	0.1	0.3	0.7	1.4	\$7
Loudoun County Public Library	Leesburg	VA	418,690	\$22.6	\$54	9.4	3.6	3.7	0.8	0.2	0.7	1.1	\$6
Pioneer Library System	Norman	OK	418,426	\$21.3	\$51	4.4	2.3	2.6	0.2	0.3	0.2	1.3	\$8
Solano County Library	Fairfield	CA	417,569	\$23.9	\$57	3.6	1.1	1.8	0.3	0.3	0.1	0.8	\$5
Richland County Public Library	Columbia	SC	416,147	\$31.2	\$75	5.1	2.7	2.7	0.1	0.6	0.4	1.2	\$8
Budget (+/- \$1,000,000)			KDL Rank >	3rd	3rd	1st	3rd	2nd	1st	4th	2nd	3rd	3rd
Kansas City Public Library	Kansas City	MO	232,498	\$29.4	\$126	3.8	5.0	2.6	0.3	0.8	0.5	2.6	\$13
San Bernardino County Library	San Bernardino	CA	1,263,869	\$29.1	\$23	2.9	0.7	1.2	0.1	0.3	0.0	0.9	\$2
Salt Lake City Public Library System	Salt Lake City	UT	204,657	\$28.3	\$138	8.9	4.2	5.2	0.3	0.7	22.4	1.8	\$16
Fulton County Library System	Atlanta	GA	1,094,703	\$27.9	\$25	2.1	1.2	1.6	0.1	0.4	0.0	1.1	\$3

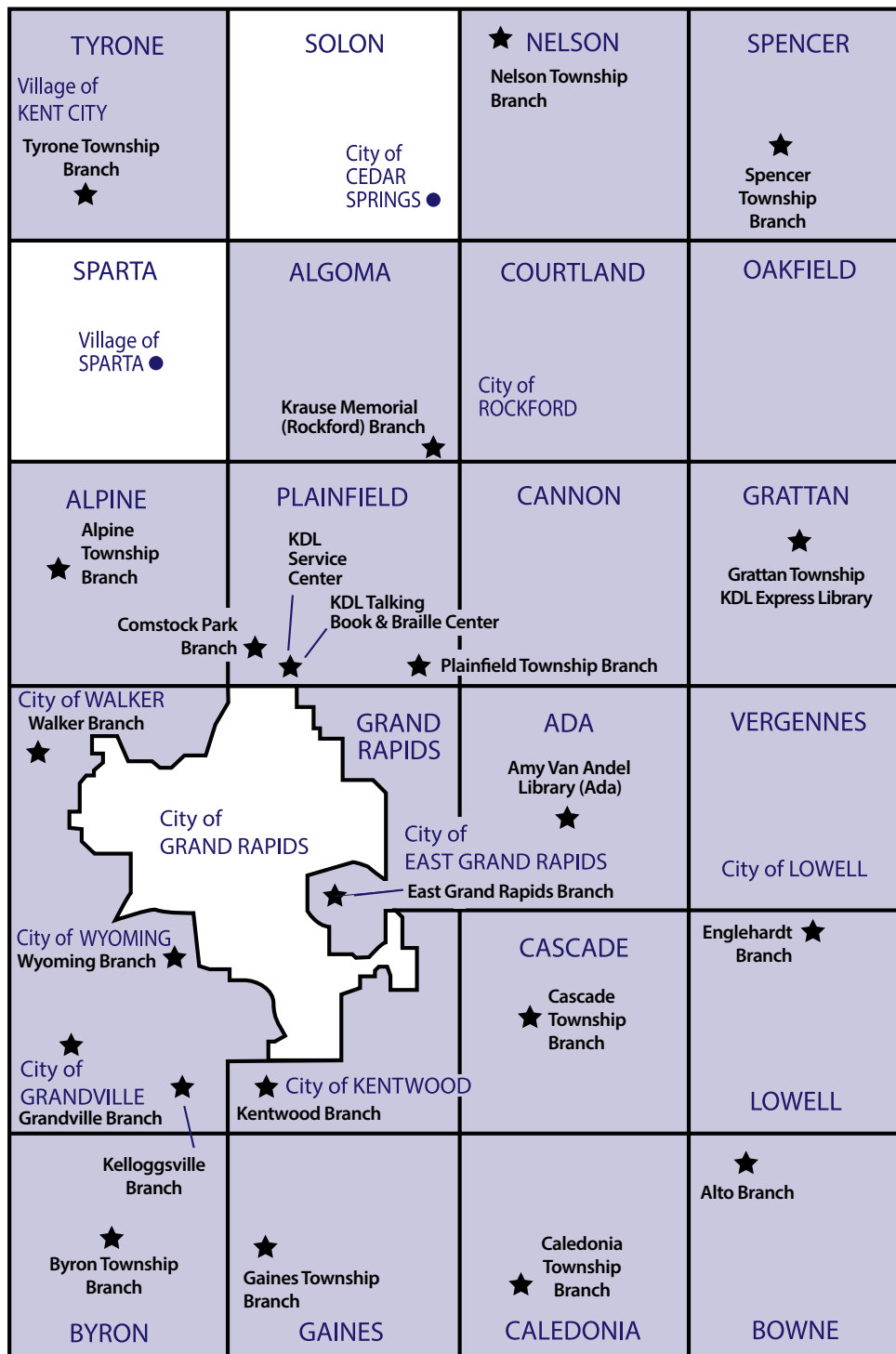
State Comparison (2023-2024 Michigan Public Library Statistics for 12 largest libraries)

Library	Physical Collection Turnover *	Number of Registered Borrowers	% of Operating Expenditures On Materials	Total Annual Visits	Physical Circulation	Circulation of Electronic Materials	Total Operating Expenditures	Total Operating Income
Kent District Library	7.3	132,795	14.9%	2,276,639	5,162,354	2,420,617	\$31,028,699	\$30,622,530
KDL Michigan Ranking >	2nd	3rd	3rd	1st	1st	1st	1st	2nd
Ann Arbor District Library	9.8	58,648	8.8%	1,444,075	4,656,258	2,082,886	\$18,903,992	\$21,355,196
Capital Area District Libraries	3.3	92,454	14.5%	751,818	1,647,299	739,715	\$13,324,540	\$13,873,291
Clinton-Macomb Public Library	3.1	157,867	14.7%	428,600	1,251,277	174,507	\$7,335,913	\$9,612,752
Detroit Public Library	0.1	138,683	3.5%	343,443	166,538	146,960	\$30,867,468	\$38,954,063
Genesee District Library	1.1	97,467	17.9%	689,481	624,283	501,757	\$9,145,350	\$10,853,862
Grand Rapids Public Library	0.9	52,547	11.4%	495,245	763,245	618,112	\$13,197,755	\$14,492,468
Jackson District Library	3.0	45,628	14.3%	391,791	1,201,280	259,506	\$9,195,561	\$10,633,947
Monroe County Library System	1.7	23,599	10.1%	408,205	656,501	163,513	\$7,967,293	\$8,251,926
Saint Clair County Library System	0.8	53,602	15.2%	230,013	349,447	138,588	\$5,805,179	\$9,633,760
Sterling Heights Public Library	1.9	70,608	9.4%	179,222	349,879	136,843	\$3,056,983	\$3,062,382
Warren Public Library	1.5	70,280	10.7%	213,739	525,176	115,955	\$5,071,533	\$6,822,999

*Collection turnover indicates how often items in the collection are borrowed. It's calculated by dividing the total circulation by the total number of items. Higher collection turnover indicates a more healthy and robust use of the collection.

Kent District Library Service Area

The KDL service area includes all of Kent County except for the City of Grand Rapids, City of Cedar Springs, Solon Township, Sparta Township, the Village of Sparta and the portion of Bowne and Caledonia Townships within the Thornapple Kellogg school district.





Kent
District
Library



814 W. River Center Dr. NE, Comstock Park, MI 49321 // kdl.org